

# THE TOWER TIE

The Newsletter of the  
First Presbyterian Church of Goshen

33 Park Place; Goshen, NY 10924  
The Reverend David Calvin Kingsley, Pastor

Robert J. Clooney, Director of Ministry of Music  
Patricia Schwetje, Church Secretary

Telephone: (845) 294-7991; fax: (845) 615-1239  
email: [fpgoshen@frontiernet.net](mailto:fpgoshen@frontiernet.net)

Web Page: [www.fpgoshen.org](http://www.fpgoshen.org)

September 2013

Dear Brothers and Sisters in Christ,

The great home run king, Babe Ruth was traded by the Yankees to the Braves in the final years of his baseball career. Despite the fact that he had thrilled spectators for years, a long hitting slump drew the jeers of many fans. In one ill-fated game he struck out several times and made several costly errors that allowed for five runs to be scored by the opposing team.

The people in the stands turned on him, yelling hurtful remarks like: "You're a has been! Hang it up Babe! Go home and don't embarrass yourself anymore!" Some fan even began to throw things onto the field. The once great Babe Ruth could only hang his head, fight back the tears, and head toward the dugout.

But an interesting thing happened that day. A young boy with tears running down his cheeks jumped over the railing (while all the others booed) and ran out to Babe Ruth to give him a hug. Babe Ruth picked up this little fan in his tremendous arms and hugged him back.

The crowd grew silent, and in the prophetic silence, everyone watched (many in shame) as Babe Ruth and his little, loyal friend walked hand in hand to the dugout.

A British newspaper once offered a prize to anyone who would submit the best definition of a friend. Many definitions were sent in, but the winning definition is one I think we should put to memory: "**A friend is the one who comes in when the whole world has gone out.**"

The friendships we develop with others can say a lot about who we are as a people and a lot about the Lord we serve. One of the scriptures that comes to my mind when thinking about friendship is from Proverbs: "*A friend loves at all times, and kinsfolk are born to share adversity.*" (Proverbs 17:17)

Most people have several acquaintances they call friends. Few, however, have developed the depth of relationship with others that can really make a difference in our lives. I'm talking about relationships that go beyond the surface to sharing struggles openly and honestly, as well as sharing insight and concern from a standpoint of our faith in Christ.

I have been amazed over the years at the number of people who have shared with me their timidity in sharing Christ and the Word of God even with the closest of friends. As disciples, there could be no greater joy than sharing Christ with a friend. "Make a friend. Be a friend. Bring a friend to Christ."

Do you know someone who is hurting, or lonely, or in need today? Perhaps God is calling you to be a friend who can make a difference in that person's life. Christ has certainly made a difference in ours. Let's pass it on.

Peace in Christ,  
Pastor Kingsley

## SEPTEMBER OPENS NEW DOORS IN OUR LIVES

The summer months have literally flown by. We have taken time for rest, vacation, and having our spirits renewed by the abundance of growing life around us – green trees, the buzzing of locusts, flower gardens, fruits and vegetables. It is the bounty of summer and our legacy to take it all in. We now come to the change of seasons where nature slowly starts to die off which needs to happen in order to renew itself next year after a winter's rest. It is the cycle of seasons that we follow in our lives as well. September brings us back to the rhythm of school, Sunday worship, and fall activities.

I would like to share with you an observation from my column two years ago at this time.



When I show up early to practice, whether for a service, funeral or wedding, the sanctuary is empty. It's very quiet except for the creaking of the pew wood as I walk the aisle, and if I stand still, it is silent. Then, as people file in, the sanctuary takes on a life, it comes alive, and there is energy in the space. The elements of music, spoken word from the scriptures, prayer, and fellowship fill the silence. It's a great uplifting feeling. And then... it all reverts back to silence once again. It is the energy and presence of each of us that fills the space—our personalities, our voices, our prayers, and our concerns all give life and meaning to an otherwise empty sanctuary space. Think about this and your role in ministering with your presence.

The choir begins a regular rehearsal schedule on Thursdays in the parlor at 7:30 p.m. We will be preparing introits and anthems for our Sunday worship service. Please think about joining and helping us expand our sections. We take our time learning the parts, and we help one another along. We'd love to have you sing with us this coming fall!



I look forward to an exciting time of music and worship as we prepare to give our best for the praise and glory of God.

Robert Clooney  
Director of Ministry of Music

\*\*\*\*\*

### DID YOU KNOW?

Our church is affiliated with Just Energy, an energy supplier, who provides us with a monthly rebate based on a percentage of the energy charges of our members who have signed up for this service. As of June 2013, there are eighteen members who participate by purchasing their electric and/or gas from Just Energy. Our average monthly rebate is \$43.33, or approx. \$2.40 per participant. If we can get just 25% of our members (approximately 75 people) to join, this would provide us with \$180.00 a month. Not bad for just a phone call and you never know, maybe even get a better rate than you get now. For more information on this program please call Miriam Stiefel at 845-228-3401. Tell her you are calling for the First Presbyterian Church in Goshen, New York and use Promotion Code: FPCG.

### PLEASE PAY YOUR PER CAPITA ASSESSMENT FOR 2013

Every year, the Presbytery of the Hudson River charges every member church an assessment according to the current active membership. Our recorded active membership is currently **348** and **our assessment per member** (not per family) **for 2013 is \$30.00**, which is a total of **\$10,440.00** to be taken from our operating budget. Please assist with this expense and write a check for your family assessment, if you haven't already done so, and either mail it to the church or place it in the Sunday offering plate. Thanks for doing your share.

## **GEL GEMS RETAILER WINDOW CONTEST**

In June, Linda's Office Supplies supported the efforts of the Tiffany Window Fundraising Committee by participating in the Gel Gems Retailer Window Contest. Michele Meek created a stunning Gel Gems "Tiffany Window" that was on display at Linda's. Gel Gems donated three cash prizes for the best windows to the winner's charity of choice. Linda's charity was the Tiffany Window Fundraising Committee.

We are happy to announce that Linda's came in second place and our church received \$500 to put toward the Tiffany Window preservation.

Thank you to everyone who voted! This money will be a great help toward preserving these treasured windows.

## **JOIN US IN A BEAUTIFUL DAY IN THE NEIGHBORHOOD TOUR**

**Tour Date: Saturday, September 28 at 11:00 a.m. - FREE**

**Our Host: The Executive Director of Habitat for Humanity of Greater Newburgh**

We hope members of our congregation will join us in a tour of the work of Habitat for Humanity of Greater Newburgh whose volunteers have built sixty-seven homes in the City of Newburgh during the last fourteen years. The one-hour tour aboard an air-conditioned tour bus will enable us to view the house-by-house transformation of a community, witness Habitat's volunteers in action and hear from partner families. PresbyBuild's six sponsored homes will be included on the tour.

We must reserve spots on the bus, so please let us know if you are interested by September 15. **Contact Mission Committee members - Louise Spencer (615-0983) or Sue Varden (649-7830).**

## **HAVE YOU CHECKED OUT THE CHURCH'S WEBSITE?**

The First Presbyterian Church has a beautiful, informative website. You can visit it at [www.fpgoshen.org](http://www.fpgoshen.org). **THANK YOU** to Elder, Dom Fontana who designed it and continues to keep it up-to-date. If you have any church event that you want to post, let Dom know. His e-mail address is [dfontana@dominickfontana.com](mailto:dfontana@dominickfontana.com)

## **CANS AND BOTTLES**

**The church will no longer be collecting cans and bottles.** It has been difficult to find people to take them for redemption on a regular basis and it has become more work than profit. So please do not bring in any more. Thank you all for supporting this effort for the past several years.

## 2013 - 2014 Sunday School Registration Form

Please fill out and return by September 4<sup>th</sup> using any of the following methods:

- Drop in offering plate
- Return to Pat in the office
- Email back to me at: [linda.sundayschool@gmail.com](mailto:linda.sundayschool@gmail.com)

Registration can also be done directly through church web site: [www.fpgoshen.org](http://www.fpgoshen.org)

Student Name: \_\_\_\_\_

Date of Birth: \_\_\_\_\_

Grade in school as of September 2013: \_\_\_\_\_

Parent's names: \_\_\_\_\_

Phone numbers: Cell: \_\_\_\_\_  
Home: \_\_\_\_\_

\*E-mail: \_\_\_\_\_

Student's talents or interests:  
\_\_\_\_\_

Parent's talents or interests:  
\_\_\_\_\_

Parent's help if/when needed (circle any): Art      Music      Snacks      Pageant

Any concerns we should be aware of: (allergies, etc.)  
\_\_\_\_\_  
\_\_\_\_\_  
\_\_\_\_\_

3<sup>rd</sup> grader interested in being an Acolyte:      Yes      No  
\_\_\_\_\_

\*Most communication will be through email. I will send weekly reminders, list of upcoming activities and/or events, projects Sunday school is working on, etc.

## **“LOVE AN ELDER DAY”**

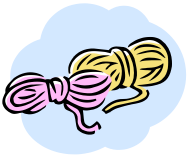
The First Presbyterian Church’s Sunday school classes plan to celebrate UN's International Day of Older Persons with a special coffee hour on September 29 after worship.

Please make your best efforts to bring an elderly neighbor or relative (or both!) to church that Sunday and then to Fellowship Hall to enjoy the special coffee hour in their honor.

"Honor thy father and thy mother" certainly extends to our parents' parents. They have raised, coached, taught and shared with the younger generations.

The UN's International Day of Older Persons is October 1, 2013.  
New York State's Love an Elder Day is also October 1, 2013.

Please come and help us recognize and celebrate our history makers.



## **HUG HAPPENINGS – NEWS OF THE PRAYER SHAWL MINISTRY**

Most people can’t even imagine working with yarn during the hot summer months, but our dedicated ladies still picked up the crochet hook and got the job done. Shawls are in the room above the church office if anyone needs one.

Shawls continued to go out from our church doors during the summer as far as Florida. We also made a presentation to Linda Boardman from all of the ladies of the church during the Honoree Luncheon on July 21.

We are hoping to expand the group this year and to once again meet and talk about how we present the shawls, learn some new stitches and patterns, and get some new ideas for our ministry. If you have any ideas or a day that is good for you, please let me or any of the ladies in the group know. You can also leave a note for us with Pat in the office and we will concentrate on picking a time and place to start this.

Again we thank those of you who donated yarn, tissue paper, gift bags, folders etc. for our distribution of the “hugs.” We are sorry if we missed anyone who needed a shawl. Please let one of us know if there is a need or let Pat know in the office and she will be in touch with us so that the “hug” gets delivered to who needs it.

God bless each of you and consider yourselves hugged,

Wendy Lee Paffenroth  
Prayer Shawl Ministry



## PRESBYTERIAN WOMEN'S ASSOCIATION (PW)

Hello everyone,

Hope you had a great summer. PW was busy during the summer. We worked at the Great American Weekend. Our new location and our new tent were very visible and a lot of people tried our iced coffee. We had a good group of workers and we thank everyone who took the time to help out in any way - from setting up, to picking up the bagels and hard rolls, to letting us use their "little red wagon" to deliver to the vendors early in the morning, to those who took drinks and food to the vendors, who sat in the heat, who helped take down the tent, and to those who kindly met with people and answered questions about our church. It was a very hot few days, but the fellowship was grand and we hope that next year we can entice a few more of you to join us.

On July 21, about thirty wonderful ladies got together to honor Linda Boardman at Glen Arden's Hospitality Room. The afternoon was lovely, the food and company was the best you can imagine, and we all made some special memories. Betty Lobb instructed us on the painting of the river rocks.... which symbolized that when a rock is dropped into water the ripples expand out; just as our faith should go out to others. Thank you for the gathering of the beautiful stones and the wonderful idea.

We presented Linda with a few tokens of the day - a photo album with pictures showing her at church functions and one to put in her vacation photos. We also gave her a "hug" from the church as a remembrance of the day and a framed prayer to go with the shawl. This is the prayer, which we thought captured the day. Thank you to everyone who helped to make this day extra special.

### FOR OUR FRIEND LINDA

*Our hearts are meant to be open, and let the friendships in,  
To have a heart not open would truly be a sin.  
How special our lives are as we walk hand-in-hand,  
We are your church sisters who love and understand.  
This shawl is a reminder of how our hearts have touched,  
When it surrounds your shoulders you'll know you're loved so much.  
Linda, you are a caring and loving person in everything you do,  
It's what makes our friendships stay tight and ring so very true.  
The good Lord gave us friendships to help us on our way,  
Your friends are all so honored to share your special day.  
Guiding our church's children in the Christian faith means so much,  
The whole congregation can see the souls you've touched.  
The children in our church hold pieces of your heart,  
No matter where they travel, you will never be far apart.  
We all admire your qualities; you are just one of a kind,  
How lucky God chose to cross our paths and make you a friend of mine.  
Remember that this shawl is filled with hope and love,  
But most of all it is filled with the blessings from heaven above. AMEN  
God Bless You, Linda*



Our next meeting will be on September 9 at 7:30 p.m. in the church parlor. We will start planning the bake sale that is held at the craft fair on November 23. We will be asking our bakers to help fill our table again. I am sure we will need some soup and chili makers and volunteers to run the table, as well. Please mark your busy calendars now if you think you may be able to help. See you on September 9<sup>th</sup>. Any announcements will be in the bulletin.

Wendy Lee Paffenroth, Secretary

## **TIDBITS FROM THE TOWER**



### **HAPPY SEPTEMBER BIRTHDAYS TO:**

1	<i>Rebecca Boardman</i>	17	<i>Olivia Grob</i>
	<i>Elfriede Johnson</i>		<i>Daniel Serkes</i>
2	<i>Geraldine Garrison</i>		<i>Phyla Wright</i>
3	<i>Leslie Faulds</i>	18	<i>Louise Spencer</i>
5	<i>Bill Strong</i>	19	<i>Emma Jorgensen</i>
8	<i>Karen Brooks</i>	22	<i>Bill Hodges</i>
	<i>Noah Bush</i>		<i>Grace Lanuti</i>
9	<i>Mary Roper</i>		<i>Nancy Mason</i>
10	<i>Lori Baird</i>	23	<i>Owen Hourahan</i>
	<i>Gabriela Ukejianya</i>		<i>Lucy Figueroa</i>
	<i>Nancy Warner</i>	26	<i>Abigail Boardman</i>
12	<i>Jenna George</i>		<i>Gianna Hagopian</i>
	<i>Tom McDowell</i>		<i>Kiersten Warner</i>
16	<i>Mary Lee Berry</i>	27	<i>Debra Lystad</i>
	<i>Michael Hagopian</i>	30	<i>Darren Baird</i>
	<i>Kelly McCloud</i>		<i>Michele Meek</i>

### **HAPPY SEPTEMBER ANNIVERSARIES TO:**

8	<i>Alan and Glynnis Jorgensen</i>
23	<i>Jeffrey and Erica Gati</i>
25	<i>Luis and Lucy Figueroa</i>
28	<i>Bill and Jean Strong</i>

*If you are also celebrating a special day, we wish you much happiness. If you would like your birthday and/or anniversary included, please give your dates to Pat in the church office.*

***Congratulations to Anne Wood who was called as the Stated Supply to the First Presbyterian Church of Jeffersonville, New York. She will start Labor Day weekend.***

### **Thank You**

*I'd like to thank everyone for all your get-well cards, visits, kind thoughts, and especially your prayers during my recent illness.*

*I know that the support from Rev. Kingsley and all of the parishioners hastened my recovery. I couldn't have done it alone.*

*I mentioned in my article that explained my bout with babesiosis that I had "good fortune" at various times during my recovery process, but we all know it was God's intervention that was aiding me. God's intervention made stronger by your prayers.*

*Once more, thank you for thinking of me and being there for me when I so needed it.*

*Geri Corey*





## PRAYER CORNER

**The following members or friends are going through a time in which they have asked for prayer by the church. Please keep the following people in your prayers:**

Vince Ahrens  
The Barron Family  
Mary Lee and Ted Berry  
Grace Cook  
Shannon Decker  
Joe Destefano  
Everyone serving in the Military  
Ben Fisher  
The George Family  
Kevin and Sara Hankins  
Audrey Howell  
Laura and Tom Kennedy  
Mae Kratz  
Margaretta Macica  
The Family of Melissa Martucci  
Michele Meek and Family  
Jude Monteleone  
Richard Nash  
Ann Ott  
Eltra Reeves  
Loretta Richner  
Kevin Schuler  
Dorothy Sevcik  
Bill and Jean Strong  
Kenya VanZandt  
Jean Wade  
Jo Wolfe  
Sharon Worden

Dedra Altizer  
Emily Barry and Family  
Sarah Burrows  
Carol Coon  
Mary Jane DeFreece  
Sally Dorritie  
Evie and Family  
Norm and Sharon Frelinger  
Kate Goodspeed  
The Family of Barry Hoffman  
Rosemary Joy  
Kim  
Jeff Knox  
James Magee  
Andy Marussich  
Evelyn Mercado  
Heather Mustavs  
Nina and Jason  
Velma Peters  
Ilona Reichl  
Ted Sandstrom  
Fred Schwarz  
Peggy Srirach  
George Tietz  
Ashley Wade  
Molly Wanat  
Anne Wood's dad  
Phyla Wright

Millie Augere  
JoAnna Becerril  
Mary Carr  
Bruce and Jean Crandall  
Bob Dennis  
David Dzierzek  
Mary Lee Farris' sister  
Fran Genovese  
Barbara and George Hankins  
Don Hoffmann  
Bob and Barbara Kennedy  
Roberta Kinnamon  
Robert Lobb  
Nancy Mason  
Donna Masker  
Jeff Monroe  
Eileen Myslinski  
Amy (Thompson) Nguyen  
The Family of Marina Peterson  
Tim Richardson  
Tom Sawyer  
Bryan Scott and Family  
The Smith Family  
Kim Valentini and Family  
Wendy-Bynum Wade  
The Weinberger Family  
Orra and Dale Wood

***(If you or someone you know would like to be on this list or if you would like to take a name off the list, please call the church office and the name(s) will be included/omitted next month.)***



## **Maney-Hawkins Meditation Garden**

### **SEPTEMBER UPDATE**

#### **New Bench and Two Planters**

A new memorial bench was installed (to replace the damaged bench) along with two planters on either side to add beauty to the garden. This was all done with funds from outside the operating budget.

---

#### **Memorial Pavers Have Arrived**

Fourteen new engraved pavers have arrived and will be installed very soon. To order a memorial paver for later this year to honor or remember a loved one, please see Pat in the church office. The cost of each paver is \$100.

---

#### **Niches are Available for Purchase in the Memorial Columbarium**

Fifteen niches remain available in the memorial columbarium. Each niche allows for double or single interment with four purchase options:

Payment in Full = \$2,500

12-Month Payment Option = \$250 / month for 12 months (\$3,000)

24-Month Payment Option = \$130 / month for 24 months (\$3,120)

36-Month Payment Option = \$ 90 / month for 36 months (\$3,240)

---

#### **“Stewards of Our Garden”**

***Thank you to our dedicated Stewards for keeping the garden neat!***

#### **The September & early October Steward’s schedule:**

Jen and Greg Piller:	September 1 – September 15
Beryl Yungman and Karen Bende:	September 16 – September 30
Barbara and George Hankins:	October 1 – October 15

*It takes only a few minutes of your time each month to pick up any litter, pull a weed, or sweep a few pavers clean, and you can help keep our garden beautiful! Contact Pat in the church office to sign up.*

---

Please call the church office (845-294-7991), Rev. Kingsley, or Wayne George (914-213-4093) for any information you need about the Maney-Hawkins Meditation Garden.

## WHO DO I CONTACT?

<b>BIBLE STUDY (2<sup>nd</sup> and 4<sup>th</sup> Tuesdays):</b>	Geri Corey	294-8414
<b>BUNNY BREAKFAST:</b>	Elizabeth (BA) Long	343-7571
	Linda Boardman	469-6063
	Michele Meek	294-2859
<b>CHRISTIAN EDUCATION:</b>	Elizabeth (BA) Long, Chairperson	343-7571
	Linda Boardman, Director of Education	469-6063
<b>CHOIR:</b>	Robert Clooney	201-783-8404
<b>CHURCH OFFICE:</b>	Pastor Kingsley	294-7991 (office) 551-2780 (cell)
	Pat Schwetje, Secretary	294-7991
<b>CLERK OF SESSION:</b>	Sue Varden	649-7830
<b>COFFEE HOUR:</b>	Sue Varden	649-7830
	Linda Clark	294-7488
<b>COLUMBARIUM:</b>	Wayne George	914-213-4093
<b>COMMUNITY DINNER:</b>	Pat Green	294-3330
<b>COMMUNITY YARD SALE:</b>	Darlene Bartley	238-4368
<b>CRAFT FAIR VENDORS:</b>	Lori Baird	200-5640
<b>DEACONS:</b>	Carolyn Keller, Co- Moderator	294-5508
	Carol Gabella, Co-Moderator	342-4367
<b>FELLOWSHIP/OUTREACH COMM.:</b>	Linda Clark, Chairperson	294-7488
<b>FLOWERS:</b>	Carol Gabella	342-4367
	Carolyn Keller	294-5508
	Betty Lobb	294-6344
<b>FINANCE &amp; ADMINISTRATION:</b>	Mal Stewart, Chairperson	294-7243
<b>FINANCIAL SECRETARY:</b>	Richard Paulus	294-7190
<b>TREASURER:</b>	Kim Hoernig	304-9668
<b>FOOD PANTRY:</b>	Carolyn and Bill Keller	294-5508
<b>FUNDRAISING:</b>	Grover vonPentz, Co-Chairperson	291-1932
	Darlene Bartley, Co-Chairperson	238-4368
<b>LAY READERS:</b>	Karen Magee	294-6443
<b>MEMORIAL GARDEN:</b>	Wayne George	914-213-4093
<b>MIDNIGHT RUN:</b>	Lori Baird	200-5640
<b>MISSION COMMITTEE:</b>	Louise Spencer, Chairperson	615-0983
<b>NEWSLETTER:</b>	Pat Schwetje	294-7991
<b>NICEAN CIRCLE:</b>	Fran Hoffmann	294-6470
<b>OFFERING ENVELOPES:</b>	Richard Paulus	294-7190
<b>PERSONNEL:</b>	John Redman	651-1207
<b>PRAYER CIRCLE:</b>	Fran Hoffmann	294-6470
<b>PRAYER SHAWL MINISTRY:</b>	Wendy Paffenroth	258-4826
<b>PRESBYTERIAN WOMEN:</b>	Fran Hoffmann	294-6470
	Carolyn Keller	294-5508
	Betty Lobb	294-6344
<b>PROPERTY MANAGEMENT</b>	Tom Sawyer, Chairperson	914-443-4503
<b>RUMMAGE SALE:</b>	Glynnis Jorgensen	914-804-5476
<b>SANTA BREAKFAST:</b>	Kathy Stringer	496-7765
<b>STEWARDSHIP:</b>	George Hankins	294-8410
<b>USHERS:</b>	Carolyn Keller	294-5508
	Carol Gabella	342-4367
<b>VACATION BIBLE SCHOOL:</b>	Beth Laskoski	651-3294
	Jeanette McDowell	294-8334
<b>WEBSITE:</b>	Dom Fontana	778-4330
<b>WORSHIP AND MUSIC:</b>	Karen Magee, Chairperson	294-6443

## **DOES THE CHURCH OFFICE HAVE YOUR E-MAIL ADDRESS?**

(Some church announcements, prayer requests, etc. are sent by e-mail)

## **OUR MISSION STATEMENT**

**Confessing Jesus Christ as Lord and Savior, guided and empowered by the Holy Spirit, we shall seek to use our gifts through worship, ministry, and mission, to gather the Church in from the world, to continue to nurture one another, to serve a world still broken, and to exemplify through common values and purposes Christian discipleship to the greater glory of God.**

## **BOARD OF ELDERS**

### **Class of 2014**

**Linda Clark  
Dom Fontana  
Pat Green  
Bill Hodges  
Karen Magee  
Grover vonPentz**

### **Class of 2015**

**Kathy Alevras  
Wendy Bynum-Wade  
Elizabeth (BA) Long  
Louise Spencer  
Sue Varden  
Orra Wood**

### **Class of 2016**

**Cliff Bartley  
Geri Corey  
John Redman  
Tom Sawyer  
Mal Stewart  
Jo Wolf**

**Clerk of Session: Sue Varden**

## **BOARD OF DEACONS**

### **Class of 2014**

**Diana Bowe  
Brendan Donohue  
Lori Kilmer  
Brian Meek  
Jude Monteleone  
Richard Paulus  
Cheryl Zis**

### **Class of 2015**

**Laura Colacci  
Carol Gabella  
Jonathan Laskoski  
Tina McCloud  
Gregg Piller  
Jennifer Piller  
Nancy Smith**

### **Class of 2016**

**Wendy Donohue  
Bill Eustance  
Gina Gruber  
John Gruber  
Carolyn Keller  
Kathleen Kingsley  
Lisa Montalbano**

**Moderators of Deacons: Carolyn Keller and Carol Gabella  
Presbyterian Women:**

## **STAFF**

**Robert Clooney, Director of the Ministry of Music  
Pat Schwetje, Church Secretary  
Kim Hoernig, Church Treasurer  
Richard Paulus, Financial Secretary  
Anne Wood, CLP – Mission Pastor to Sullivan County**